

Omni-directional Antenna

Part Number: VTGL-FB-1



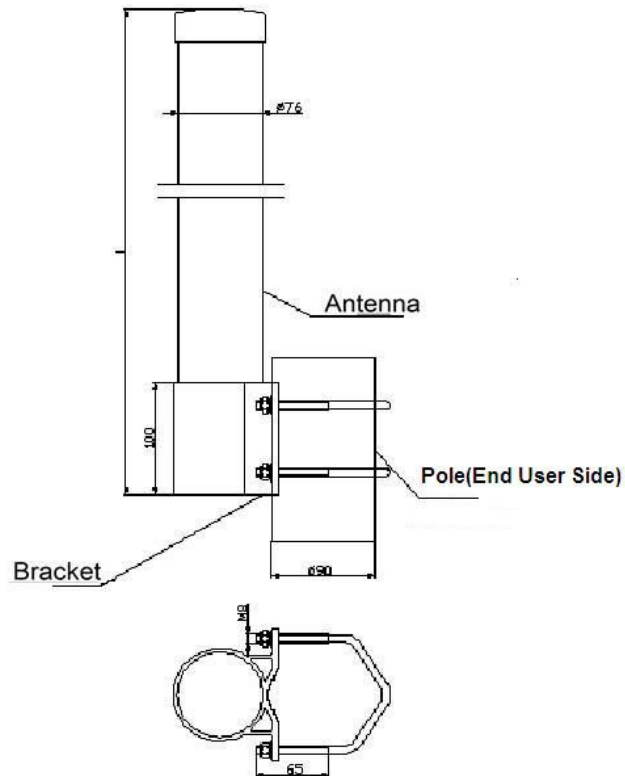
Applications

- 2G/3G/WLAN/LTE
- 698~960/1710~2700MHz band
- TDD / FDD-LTE

Features

- Broad band, Cover 698~2700MHZ common system
- Light weight, Small size

1. Installation Instruction Drawing



2. Electrical Characteristic

No .	Item	Specifications		Post Environmental Tolerance
1	Frequency (MHz)	698~960	1710~2700	
2	Gain (Zenith)	6(max)	8(max)	
3	Beam width-°	E:20±5	E:10	
5	V.S.W.R (in BW)	≤2.0		
6	Impedance	50 Ω		—
7	Polarization	Vertical		—

3. Mechanical

No .	Item	Specification
1	Cable	RG58 5M
2	Connector	SMA
3	Plastic Housing	White
4	Size	Φ7.6×115cm